

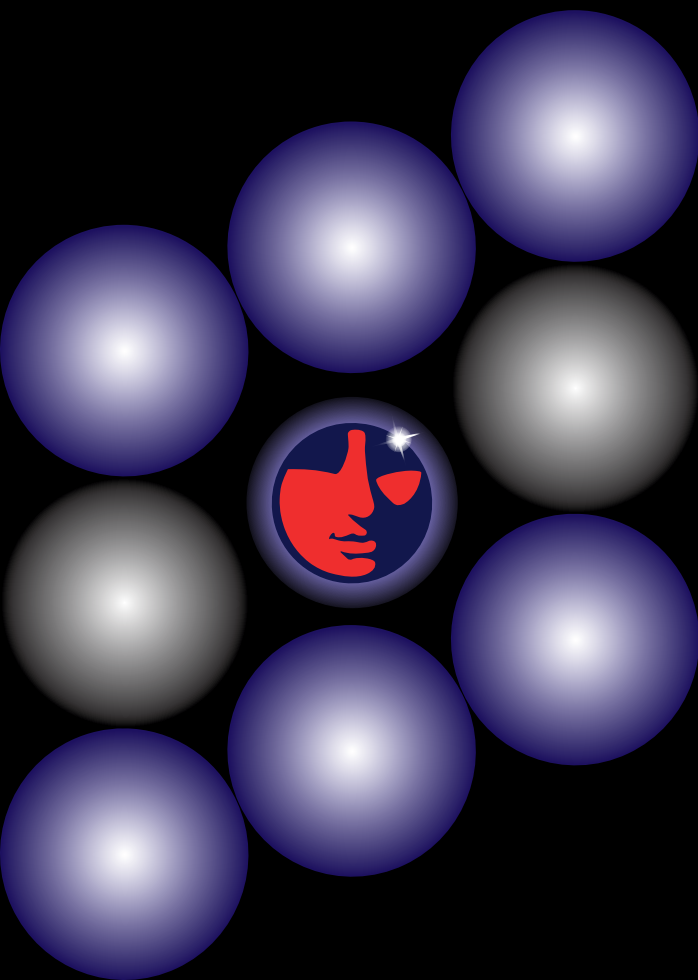
Workforce Support Project

Introduction

The PRO•A Workforce Support Project is designed to engage and support workforce participation for individuals with Substance Use Disorders or Co-Occuring Mental Health Disorders in Central and Eastern Pennsylvania.

*For additional information, or to become involved in this project,
please contact PRO•A at proa.asst@pro-a.org*

PRO•A



Who we are

The Pennsylvania Recovery Organizations Alliance (PRO•A) is the statewide non-profit, 501(c)(3) grassroots advocacy organization dedicated to supporting individuals in recovery and educating the public on addiction and recovery. PRO•A provides no direct treatment services, however, we have recently incorporated recovery support services with our Workforce Support Project. Certified Recovery Specialists (CRS) are an integral part of Systems of Care.

Our Vision

A strong statewide network of those concerned about addiction and committed to recovery, recovery community organizations, advocacy groups, family groups, drug and alcohol service system entities united in common purpose.

Our Mission

To mobilize, educate and advocate to eliminate the stigma and discrimination toward those affected by alcohol and other substance use conditions; to ensure hope, health and justice for individuals, families and those in recovery.

Statewide Coordination

PRO•A as a statewide organization has a long history of Statewide Coordination. Our statewide coordination ability is evidenced by our list of collaborators representing statewide and county level SUD prevention and treatment entities, workforce development/initiative boards, and other recovery community organizations that have agreed to serve on our Steering Committee.

How does it work?

Once engaged, participants will work directly with a Recovery Employment Coordinator, utilizing evidenced-based practices and operating across each region. Participants will be provided a 6 to 12 month intensive recovery service coordination program and peer-based recovery support services, including face-to-face and virtual support sessions, peer services and referral, social media support, aftercare planning, and family information and referral services.

What are the areas included in the project?

The geographical areas for this project include 14 counties in Central and Eastern Pennsylvania.

- Adams
- Berks
- Cumberland
- Dauphin
- Franklin
- Juniata
- Lancaster
- Lebanon
- Lehigh
- Luzerne
- Northampton
- Perry
- Schuylkill
- York

Join PRO•A's E-Member List at
pro-a.org/membership-join/membership-registration/
or email proa.asst@pro-a.org

How do I become involved in the program?

Referrals for services are welcome! If you or someone you know is interested in the service, simply email or call us at the contact information below.

Still unsure? If you are interested in connecting with PRO•A regarding the Workforce Support Project, or need further information, we would be happy to connect with you.

You can also email us at proa.asst@pro-a.org or feel free to call 717.545.8929, to request further information or to request a presentation and overview of the project.



If you or someone you know is struggling with a substance use issue, contact 1.800.662.HELP today!

YOU ARE HIRED!



Summary

The PRO•A Workforce Support Project is designed to engage and support workforce participation for individuals with a Substance Use Disorder (SUD) or Co-Occuring SUD and Mental Health Disorder (COD) in Central and Eastern PA. It will provide access to state and local One-Stop workforce development and employment services as well as recovery support services where every door provides access to treatment, recovery and workforce participation support.

PRO•A



SAMHSA
Substance Abuse and Mental Health
Services Administration

This product was supported [in part] by grant number TI083412 from the Substance Abuse and Mental Health Services Administration (SAMHSA). The content of this publication does not necessarily reflect the views or policies of SAMHSA or the U.S. Department of Health and Human Services (HHS).