



# LEADERS OF FUTURE GENERATIONS

a program of Compass Mark

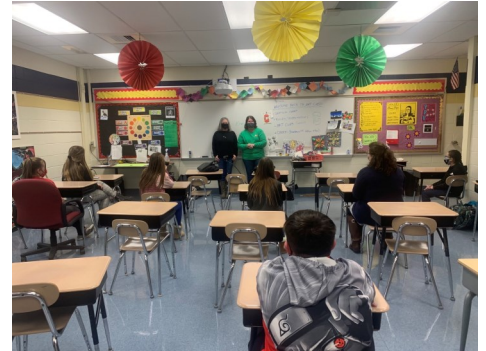


## Columbia Taylor Campus Middle School

We are very excited to announce that the LFG students in Columbia Taylor Campus Middle School started their donation drive to help the sheltered animals at Columbia Animal Shelter. The donation drive started March 29th and will end on April 30th.

This month, we had two very special guests, Tammy Loughlin (Executive Director of Columbia Animal Shelter) and Wendy (an amazing volunteer at the shelter), come to the school and talk about the ins and outs of the shelter. The group learned that the animals that are at the shelter are 90% cats! This information helped us to understand which items should be donated. We were very fortunate that these guests could come and help educate our LFG students so their service project would be successful.

Students are showing so many different leadership qualities throughout this service project process. Some of these qualities include: Responsibility, Helpfulness, Respect, Cooperation, and Communication Skills. The students have worked so well with each other to accomplish their goals for completing this project in a timely manner. Some of the tasks we have been working on are: Creating boxes for each homeroom so their peers and school staff can drop off donations; designing t-shirts, masks, and bracelets for the drive. Additionally, they are raising awareness for the drive by developing flyers and slides for the announcements, and creating posters. We are excited to see this school community come together to positively impact the Columbia Animal Shelter!



## Meet Alissa!



Alissa is a LFG participant at Columbia Taylor Campus Middle School. Her hobbies include playing softball, theatre, and hanging out with her sister. She enjoys watching movies such as *The Kissing Booth*, and her favorite animal is a fox. Alissa's

favorite food is steak and baked potatoes. Her goals for the future are to become an actress and to buy a house and start a family. Alissa admires Colleen Ballinger because she is not afraid to put herself out there. She is also funny and very kind. Alissa is hoping to gain and sharpen some of her leadership qualities such as respect, responsibility and kindness, so she can be a better leader to her peers. We are lucky to have

## Student Spotlights

## Meet Danny!



Danny is one of our mentors engaged with our Landis Run group. Some interesting facts about Danny are: His favorite dish is salt-fish and rice; his favorite animal is an owl; and he is a big fan of the movie *Black Panther*! Additionally, he is most interested in his science classes at school. Some of his hobbies include playing video games and football. Naturally, some of his career interests include being a professional football player, an architect, or a molecular engineer! Danny sees his entire family as positive role model for him, as he is uniquely inspired by each of them. He especially notes his mother's encouragement to always be courageous. When thinking about the LFG program Danny hopes to gain pro-social and life skills that will be helpful to him in his adult years. Specific leadership qualities Danny sees in himself are tenacity and valuing the art of communication. Thank you, Danny, for your mentorship!



"A leader is one who knows the way, goes the way, and shows the way."

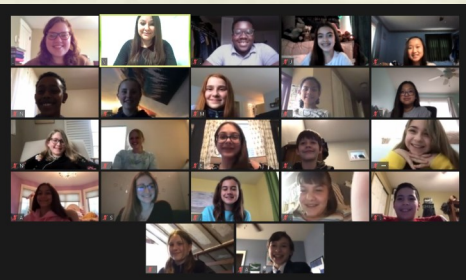
—John Maxwell



## Landis Run Intermediate School

Our virtual LFG students are hard at work on their service project! In mid-March, the team gave a phenomenal presentation to select Compass Mark and Landis Run staff, seeking the necessary support for their plans. The LFG team received encouraging feedback, as well as other ideas to think about. Our students – aka the “MHCD Leaders”, are eager to host a Mental Health Spirit Week in late April or early May, both bringing awareness to and giving peer support for how to manage our emotions well. Students hope to accomplish this through morning announcements, interactive homeroom games, posters, etc. One of the primary messages that students want to give their peers during the Spirit Week is that they are not alone!

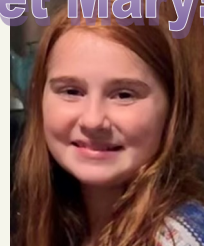
Along the way, students have been developing their leadership skills. For example, the service project has required a great deal of teamwork, and students are embracing the challenges of working together virtually by sharpening their creative skills and boldly listening to one another’s ideas. Additionally, students have been learning about topics such as how to make effective goals, as well as what resiliency looks like in leaders.



We are thankful for the students’ dedication to the group, and we are eager to continue ‘Squad’ work in the coming weeks, so that their service project plans can become a reality!

## STUDENT SPOTLIGHT

### Meet Mary!



Mary is one of our 5<sup>th</sup> grade LFG students at Landis Run Intermediate School. Some of her interests include reading, playing the flute, and spending time with family and friends including at her favorite vacation spot, Cape Cod ,MA. .

Recently, she ran a half marathon! Some interesting facts about Mary are that her favorite movie is *The Greatest Showman*, her favorite animal is the chimpanzee, and she loves homemade ice cream. Mary really enjoys her classes at school, and she hopes to one day be a biochemist. Amanda Gorman has been a role model for Mary, as Amanda pushed through her speech difficulty barriers, finding her voice to speak up for what is right, for peace, and for unity. Mary finds her poems inspiring! When talking about the LFG program, Mary hopes to learn skills that will be beneficial in any situation. She sees leadership qualities in herself including being kind, helpful, responsible, encouraging, and empathetic – and we agree!

## LEADERS OF FUTURE GENERATIONS

a program of Compass Mark

### Mission Statement

Our mission is to empower youth to become strong leaders within their school and community through skill building, mentorship and service learning.

### Vision

Building leaders for future generations.

### Compass Mark Values

**Purposeful**– We value asking thoughtful questions, embracing the courage to change, and pursuing innovation grounded in research and best practice.

**Compassion**– We value sharing with each other’s vulnerability, always seeking to guide through making individual connections.

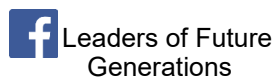
**Persistent**– We value staying the course with resolute determination, taking time to celebrate achievements along the way, and pursuing collaboration for long-term impact.

**Inclusive**– We value creating welcoming, judgement-free environment that engage our individual differences as strengths.

**Resilient**– We value the inherent potential that exists in every person and community, recognizing that the past does not determine the future.



### Follow Us!



### UPCOMING EVENTS

Kids Kamp-  
June  
21st-25th  
2021



Please keep a look-out for students bringing home Kids Kamp flyers and permission forms!

### SPECIAL THANKS!

We would like to give a huge thanks to the following businesses for their amazing support towards the program:

- Weis Markets, Inc.
- First Citizens Community Bank
- Mid Penn Bank
- Columbia Animal Shelter